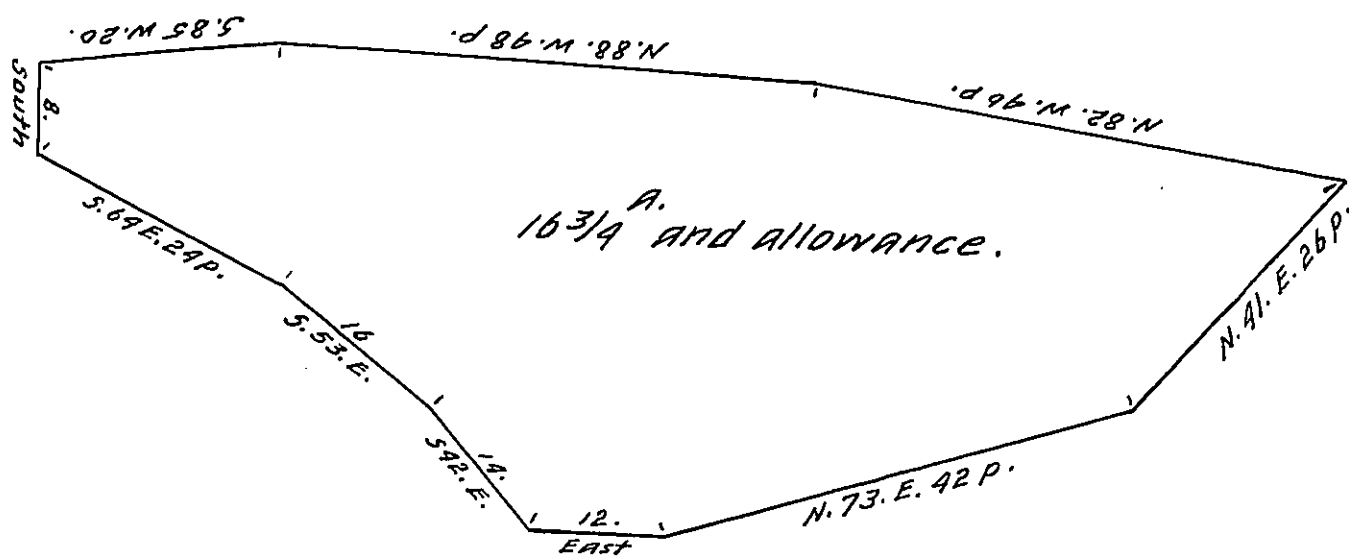


FORM No. 1.

5mi. MURRY LAND.

Down the west side of the Island.



Thence up the East side of the Island.

Surveyed for the use of the Hble the Proprietors on the 16th Day of May 1771. the above Described Island Containing Sixteen Acres and three quarters and the allowance of Six p. Ct. Situate in the River Susquehanna opposite to Land Surveyd to Samuel Murrey in Cumberland County on the West side of the said River by their Warrant of the 13th. October 1760.

p Bartrem Galbraith D.S.

To Jno. Lukens Esqr. Survr. Genl.

Note. Samuel Morrow has Improved on this Island.

B. Galbraith

N.B. this is above the Blue Mountain.

IN TESTIMONY that the above is a copy of the original remaining on file in the Department of Internal Affairs of Pennsylvania, made conformably to an Act of Assembly approved the 16th day of February, 1833, I have hereunto set my Hand and caused the Seal of said Department to be affixed at Harrisburg, this twenty seventh day of January 1910

*Henry Houck*  
Secretary of Internal Affairs.